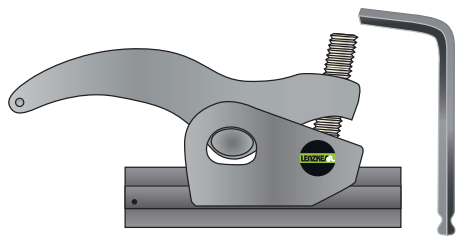
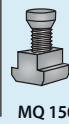
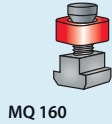


# Multi-Quick MQ 150 | 160 User Manual

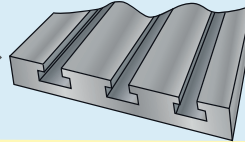
## Content:



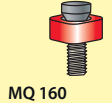
### Set 1: for T-slots



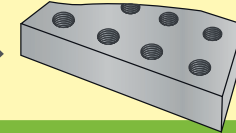
### Machine Table



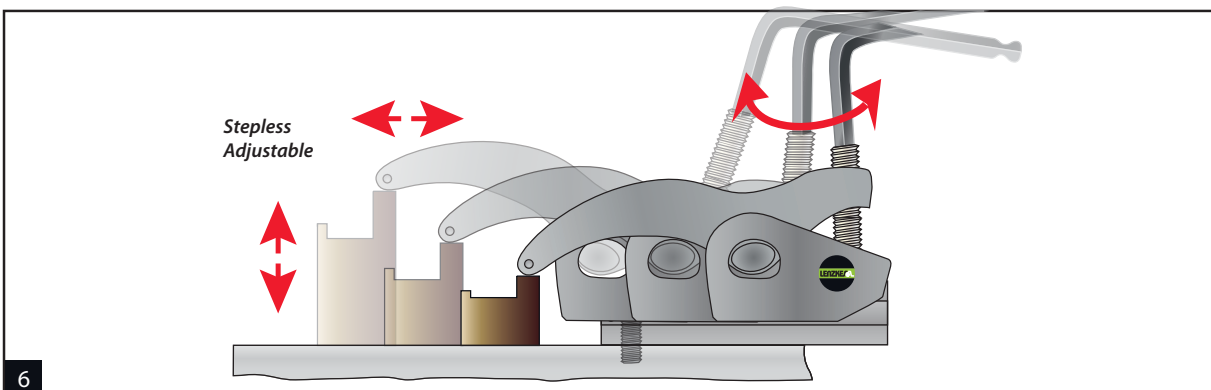
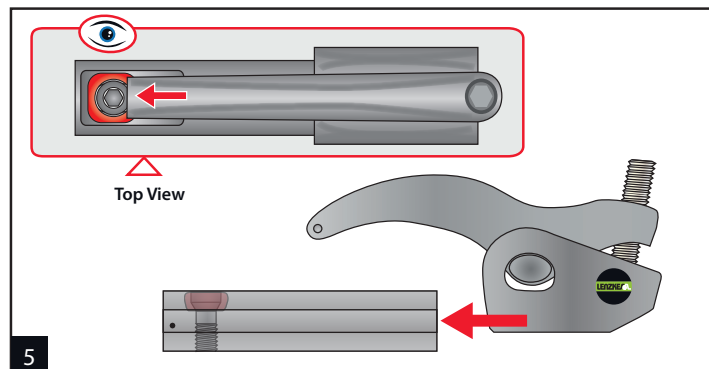
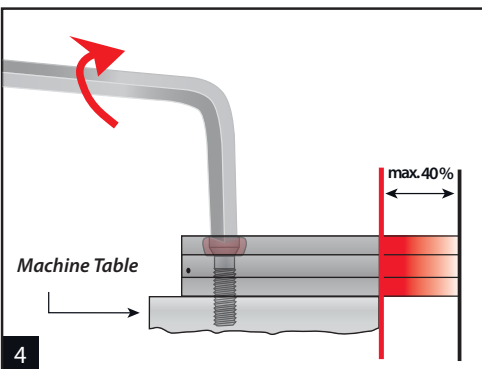
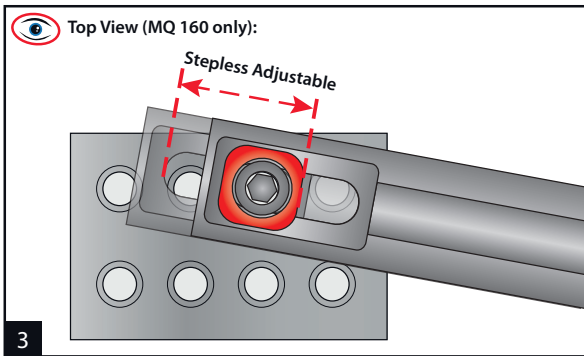
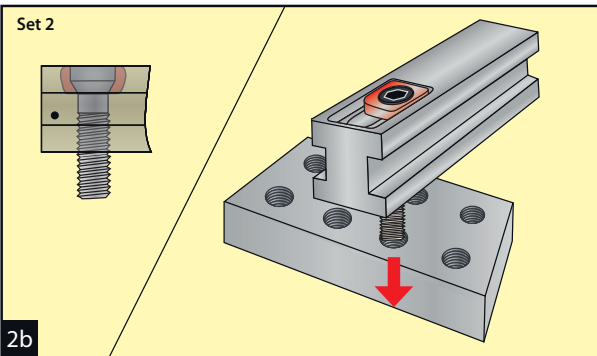
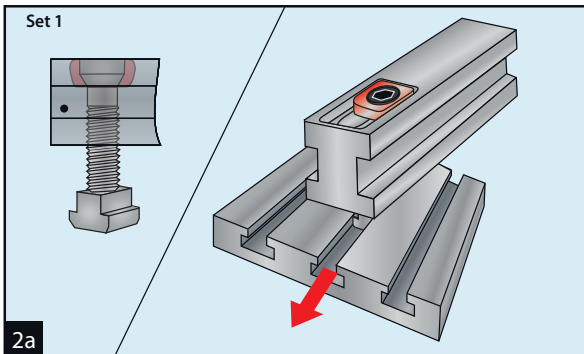
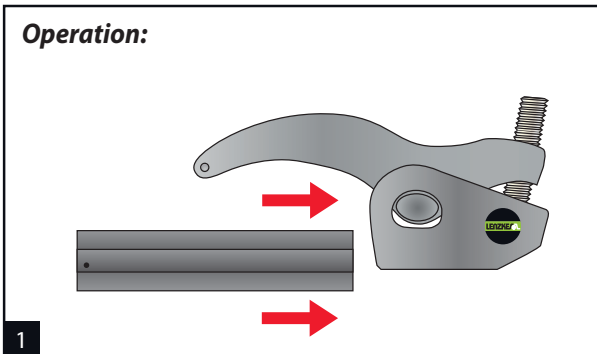
### Set 2: for Tapped Holes



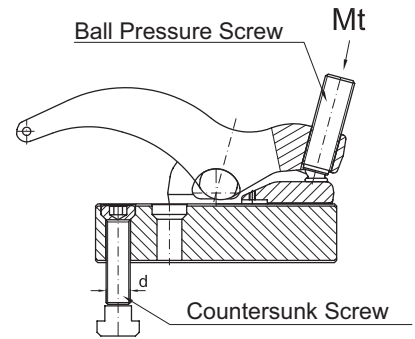
### Machine Table



## Operation:



# Technical Data for mechanical Clamps



## Multi-Quick MQ 150 | 160

### Imperial

Numbers are based on average clamping heights · Recommended Torques (friction = 0.14)

Item	Countersunk Screw (d)		Torque Countersunk Screw ft-lbs	MQ 150		MQ 160	
	inch	metric		Torque Ball Pressure Screw ft-lbs	Holding Force max. F2 lbs	Torque Ball Pressure Screw ft-lbs	Holding Force max. F2 lbs
Series 8	1/4	M06	22	-	-	-	-
	5/16	M08	26	-	-	-	-
	3/8	M10	26	-	-	-	-
	1/2	M12	30	-	-	-	-
...-13	3/8	M10	30	59	6,700	59	6,700
...-13	1/2	M12	52	74	6,700	74	6,700
...-17	-	M14	74	89	8,900	89	8,900
...-17	5/8	M16	111	111	8,900	111	8,900
...-21	-	M18	118	-	-	-	-
...-21	3/4	M20	148	-	-	-	-
...-25	7/8	M22	162	-	-	-	-
...-25/26	1	M24	207	-	-	-	-
...-31/32/37	1 1/4	M30	207	-	-	-	-

### Metric

Numbers are based on average clamping heights · Recommended Torques (friction = 0.14)

Item	Countersunk Screw d	Torque Countersunk Screw Mt Nm	MQ 150		MQ 160	
			Torque Ball Pressure Screw Mt Nm	Holding Force max. F2 kN	Torque Ball Pressure Screw Mt Nm	Holding Force max. F2 kN
Series 8	M06	30	-	-	-	-
	M08	35	-	-	-	-
	M10	35	-	-	-	-
	M12	40	-	-	-	-
...-13	M10	40	80	30	80	30
...-13	M12	70	100	30	100	30
...-17	M14	100	120	40	120	40
...-17	M16	150	150	40	150	40
...-21	M18	160	-	-	-	-
...-21	M20	200	-	-	-	-
...-25	M22	220	-	-	-	-
...-25/26	M24	280	-	-	-	-
...-31/32/37	M30	280	-	-	-	-

We reserve the rights to make technical changes